



Life Molecular Imaging (LMI): Proposition and Value Articulation

Capital Markets Day presentation

September 2024

Life Healthcare

Disclaimer

The purpose of this presentation is to introduce the recipient to Life Molecular Imaging, a subsidiary group of companies of Life Healthcare. The presentation does not purport to be all-inclusive or to contain all of the information that a prospective investor may desire.

Any reproduction or distribution of this presentation, in whole or in part, or the disclosure of its contents, is prohibited without the prior written consent of Life Healthcare. The content presented in this presentation should not be considered legal advice, and no attorney-client relationship is formed by this presentation.

All forecast financial information has not been reviewed and / or reported on by the auditors.

This presentation may contain forward-looking statements that involve a number of risks and uncertainties. Actual results could materially differ from those anticipated. Neither Life Healthcare, Life Molecular Imaging, nor any individual makes any express or implied representation or warranty as to the accuracy or completeness of the information contained herein or made available with any further investigation of this opportunity. The estimates or projections of future financial performance were derived from third party companies and involve significant assumptions, which may not be realised in fact. Such estimates, projections or other forward-looking statements have been provided to assist in an evaluation of this opportunity but are not to be viewed as factual or to be relied upon as an accurate representation of future results. Actual results may differ materially from those in such estimates, projections, or other forward-looking statements. Life Healthcare and Life Molecular Imaging expressly disclaim any and all liability that may be based on information set forth in this presentation, errors therein and /or omissions therefrom. The recipient shall be entitled to rely solely on the representations and warranties made to it in any executed definitive agreement.

Introduction



**Peter
Wharton-Hood**

Group Chief
Executive



**Pieter Van der
Westhuizen**

Group CFO



**Ludger
Dinkelborg**

Managing Director



**Colleen
Ruby**

US Country Head,
Chief Operating
Officer, Americas and
APAC



**Katherine
Otero**

Vice President, Head
of US Sales





Contents

SECTIONS	SLIDES
Overview of LMI	5 – 7
Pathway 1: Deliver our globally approved, flagship product - NeuraCeq®	8 – 21
Pathway 2: Maximise our late stage and early-stage product pipeline	22 – 27
Pathway 3: Sustain our R&D supplies and services to support pharma companies	28 – 30
Conclusion and closing remarks	31 – 33

Overview of LMI

LMI is a prominent player in the global radiopharmaceutical market

WHAT IS LMI?

-  LMI develops and sells products that are used in the **diagnosis** and **treatment** of diseases
-  LMI has an **approved product** in the market that supports the **diagnosis** of Alzheimer's Disease (AD)

EXCELLENT GROWTH IN THE PAST 12 MONTHS AND WELL POSITIONED TO GROW IN THE FUTURE

c. 85%

Increase in doses sold FY23 - FY24¹

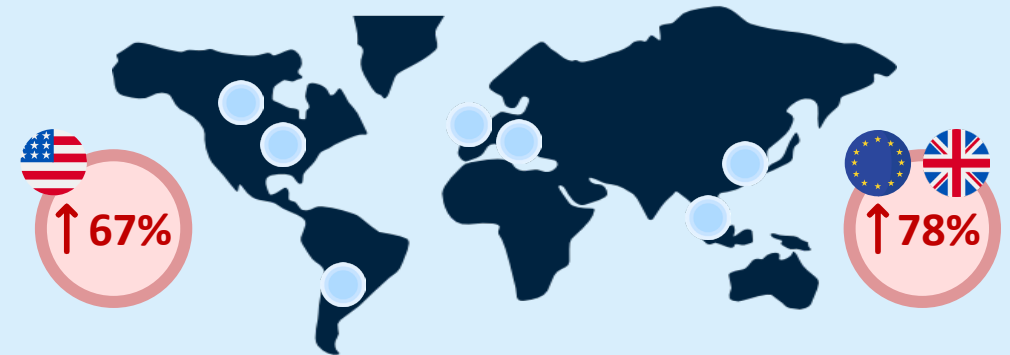
160% - 190%

Revenue FY23 - FY24²
(incl. \$36 million initial payment for RM2 out-licensing to Lantheus)

HOW IS LMI SET-UP FOR A SUCCESSFUL FUTURE GROWTH TRAJECTORY?

1

LMI is established in the EU, UK and US, and its product NeuraCeq® is established globally. LMI has built relationships with manufacturers, hospitals, imaging centres and neurologists in **key markets**



Demand for Amyloid PET-CT scans from 2024 to 2029 in US and Europe (CAGR)³

2

LMI has established **three diverse revenue streams** that will deliver, maximise and sustain significant growth in the next 5 years

¹ LMI doses of 10,851 in FY23. ² Revenue of \$36.3 million in FY23. FY24 sales projections include US NeuraCeq® sales, EU NeuraCeq® sales, R&D services and \$36 million upfront payment for RM2. ³ Market demand estimation is based on assumptions regarding the population living with Alzheimer's Disease (AD) who are eligible for PET-CT (those with mild and early symptoms), the number referred for amyloid PET-CT, and the proportion who proceed with the PET-CT scan for diagnosis and monitoring.

LMI's ambitious growth trajectory will be achieved through three pathways

1

DELIVER

**NeuraCeq**
florbetaben F18 injection

Flagship product that is approved and already in the market

c. \$2.5 billion

Potential addressable market with 20% - 40% target market share for LMI¹

2

MAXIMISE PRODUCT PIPELINE

Promising pipeline of 5 potential new products targeting different diseases, diversifying the portfolio

> \$900 million

Potential peak annual sales²

3

SUSTAIN R&D SERVICES & SUPPLIES

Offering R&D as a service to clinical research organisations drives a consistent revenue stream

c. \$20 million

Annual revenue³

THE SUCCESS OF THESE THREE PATHWAYS IS UNDERPINNED BY...

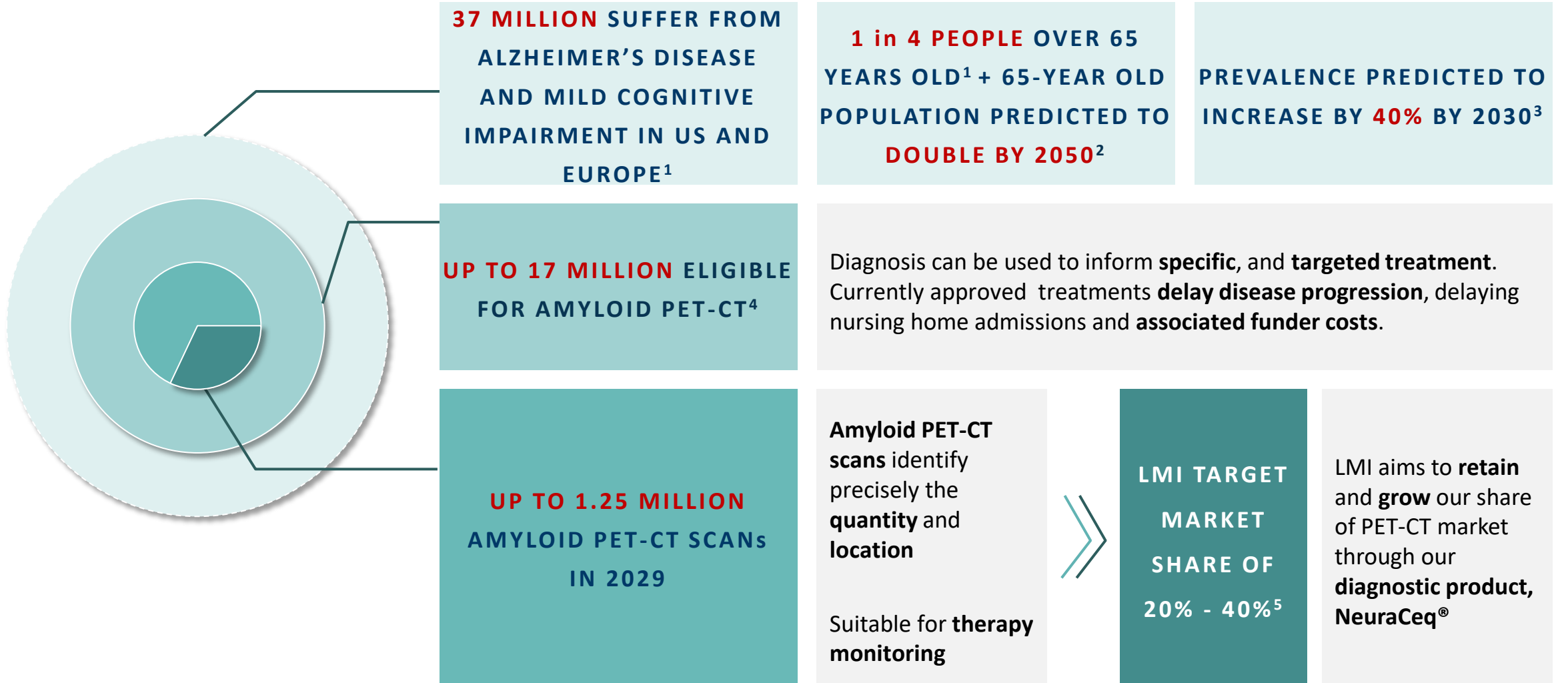
LMI's expert R&D capabilities, renowned talent and competitive market position

¹ LMI market share based on an assumption of retaining 20% to 40% market share across US and Europe in the future. ² Product pipeline potential peak annual sales figure estimates includes figures for PI-2620, CardioCeq and GP1 only (figures on the earlier-stage products are not available due to early stage of development). ³ Annual revenue for R&D services and supplies is calculated based on consistent year-on-year revenue with no anticipated growth.

Pathway 1: Deliver NeuraCeq[®]

- Alzheimer's Disease market opportunity
- Overview of NeuraCeq[®] and its value proposition
- Why LMI is well-placed to capture the market opportunity
- Potential addressable market

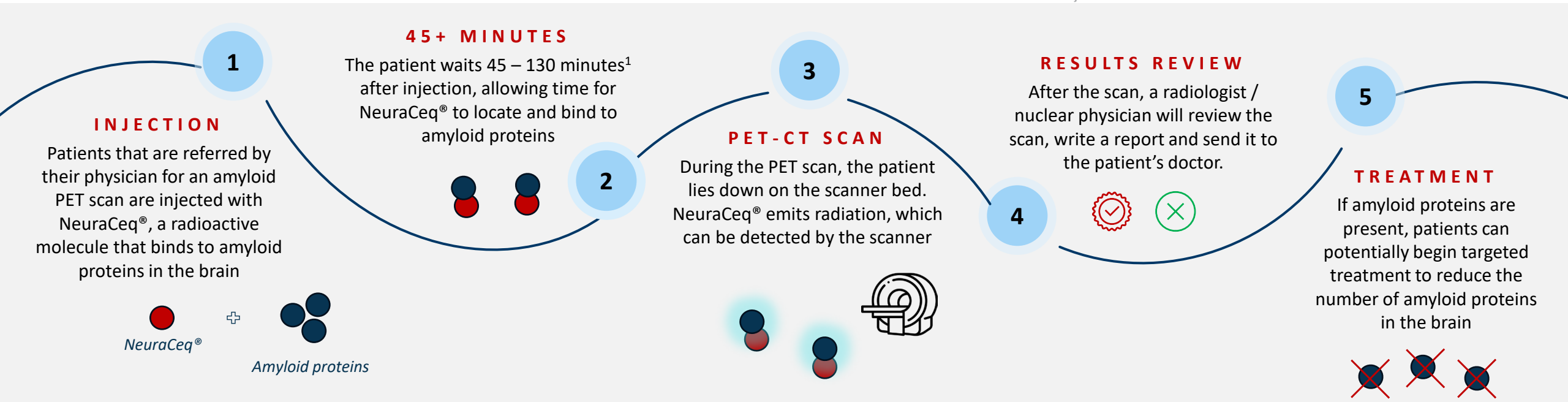
Alzheimer's disease impacts a significant proportion of the population today



¹ Number of sufferers identified based on understanding of current Alzheimer's Disease (AD) and Mild Cognitive Impairment (MCI) prevalence within >65 YOA population. Refers to just amyloid PET-CT scans.²World Health Organization, Ageing and Health Report 2022 ³Alzheimer's Association Disease Report, 2024. ⁴Population impacted is calculated as % of > 65 YOA that are impacted by MCI (Mild Cognitive Impairment) and AD (Alzheimer's Disease), using estimates of current prevalence. % eligible for PET-CT is assumption based on today's knowledge of patients referred for therapy based on having advanced-MCI or mild-AD. ⁵LMI market share based on assumption of retaining 20% to 40% market share across US and Europe in the future.

NeuraCeq® is used to help diagnose Alzheimer's disease

THE PATIENT DIAGNOSTIC JOURNEY WITH  **NeuraCeq®**
florbetaben F18 injection

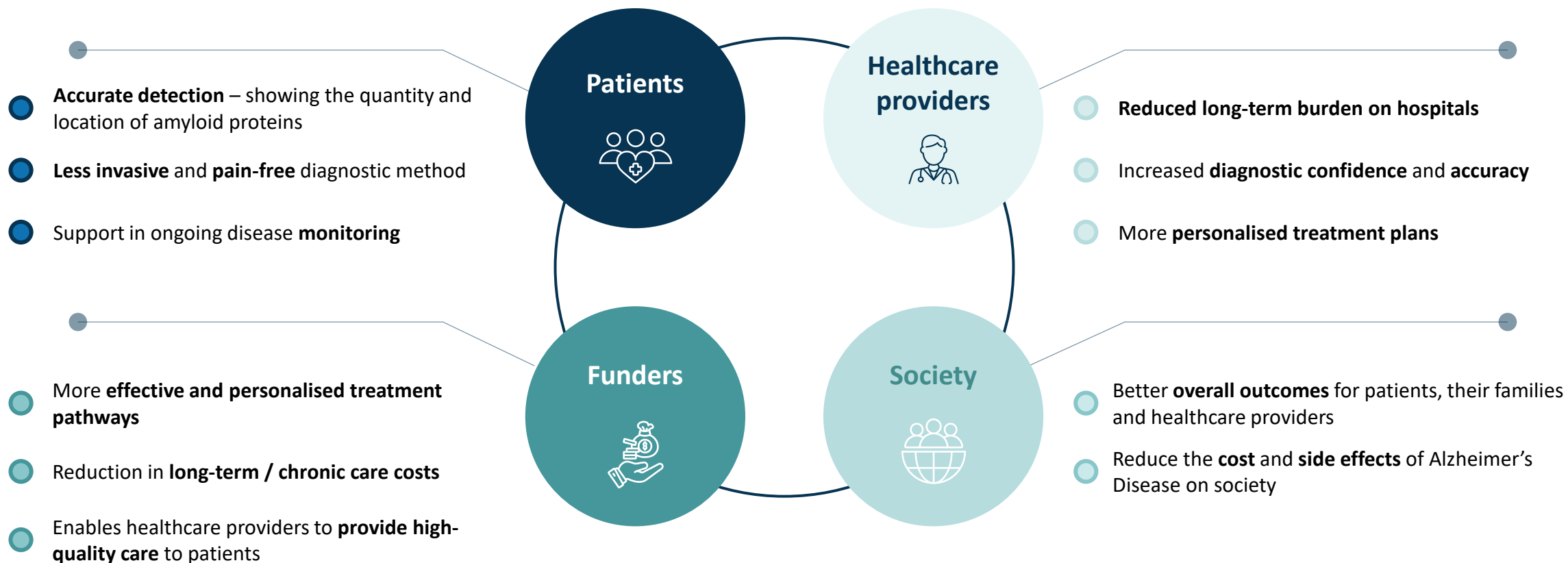


NEURACEQ® IS ALREADY USED BY MANY REPUTABLE, GLOBAL INSTITUTIONS AND PHARMA COMPANIES

¹NeuraCeq US package insert. Life Molecular Imaging Ltd., Fareham, United Kingdom, 05/2024.

NeuraCeq® delivers value to key stakeholders

NeuraCeq® delivers significant value by providing **accurate** and **specific detection** of amyloid plaques that aids in the diagnosis of Alzheimer’s disease. This diagnosis enables patients to access **disease-modifying drugs** and **medical support** to reduce symptoms and improve their condition.



Note: The value delivered by NeuraCeq® to stakeholders is based on LMI’s view.

Recent market events in the US have created an inflection point in the NeuraCeq® growth trajectory



NEURACEQ® BROUGHT TO MARKET

Growth has previously been **relatively slow** and NeuraCeq® use limited to **clinical trials**, due to absence of an **approved therapeutic drug**. Lack of **reimbursement** has also driven high **out of pocket costs** for healthcare providers

LEQEMBI® THERAPEUTIC APPROVED IN US

Leqembi® treats Alzheimer’s Disease by **removing the amyloid plaques** from the brain. This will **increase demand** for Amyloid PET-CT diagnostics to allow patients **access** to therapeutics

REIMBURSEMENT MODELS CHANGED IN US

Medicare Administrative Contractors will now **reimburse independent diagnostic testing facilities**, meaning facilities will be paid for NeuraCeq® scans. Further improvements proposed from 2025.

KISUNLA® APPROVED IN US

Kisunla® is another disease-modifying therapeutic that will **increase demand** for Amyloid PET-CT diagnostics

LEQEMBI® APPROVED IN UK

Leqembi® approved in UK on 22nd August 2024

NeuraCeq® is well-placed to capitalise on the growing market opportunity and compete with other global players

1



FIT-FOR-PURPOSE SCALE

Successfully **expanded sales team** and **manufacturing sites** in **high priority** locations, **targeting** areas in US where demand is forecasted to increase the most

2



VALUE-ADD SERVICE

Offers customers a **differentiated, value-add service** using LMI's specialist expertise, including training, education, technical services and reimbursement support to a greater extent than competitors

3



EXPERTISE AND DEEP KNOWLEDGE

LMI has built **world-leading expertise** in radiopharmaceuticals and diagnostics around the flagship product NeuraCeq® that is differentiated from competitors

4



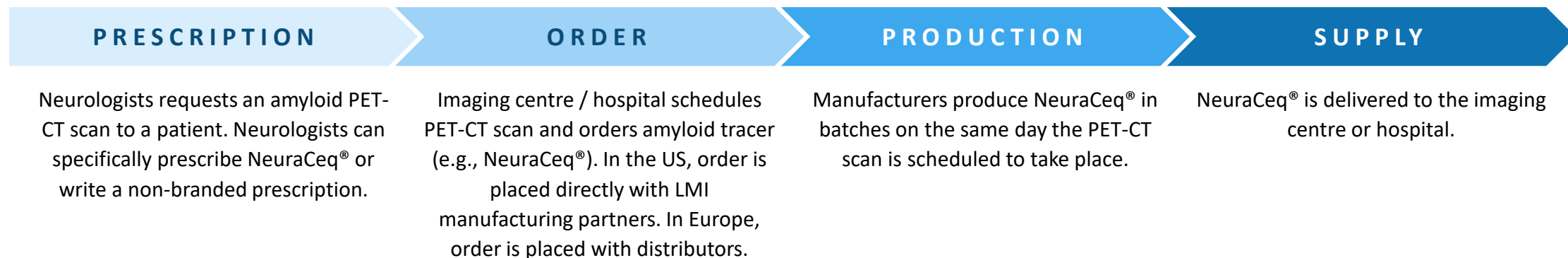
AGILE BUSINESS

LMI's business is more **agile** than larger competitors, allowing for **more targeted focus** on NeuraCeq® and ability to quickly respond to changing demand

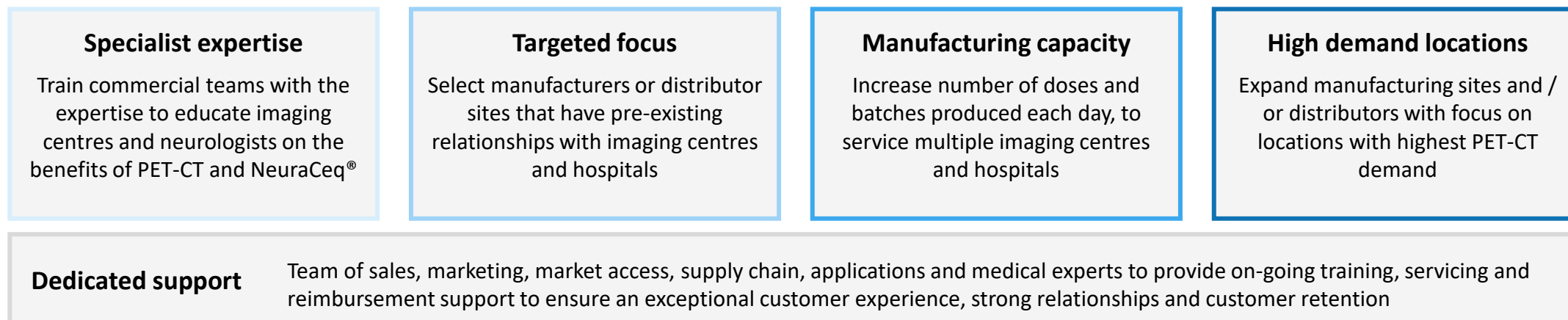
LMI have the **core components** in place to significantly **grow** NeuraCeq® in the market

Drive to maximise growth at each stage in the NeuraCeq[®] sales, manufacturing and distribution process

HOW NEURACEQ[®] IS SOLD AND SUPPLIED TO PATIENTS



TARGETED AND AGILE APPROACH TO GROW SALES IN US AND EUROPE



United States (US) team is set-up to accelerate revenue growth, thanks to our dedicated focus and deep knowledge

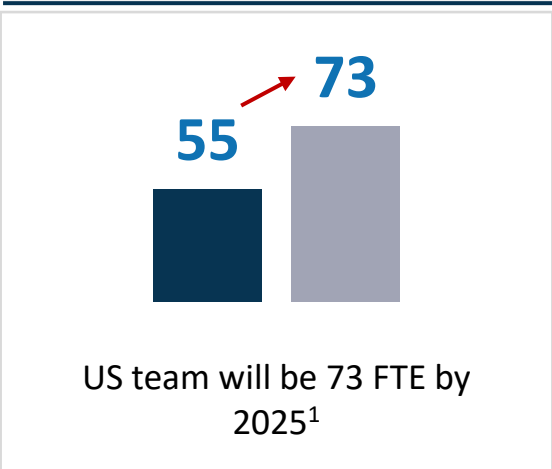
1

2

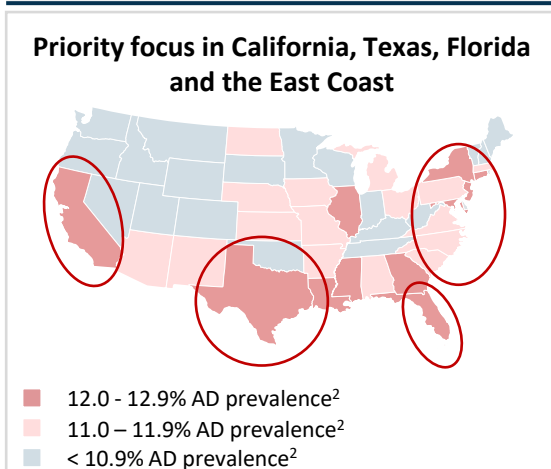
3

4

EXPANDING US TEAM
...to capture growing demand



TARGETING HIGH DEMAND AREAS
...where Alzheimer’s disease is most prevalent



DEDICATED SUPPORT TEAM
...to educate physicians and provide ongoing services and support to customers

- Commercial team consisting of...
- Sales and marketing experts
 - Reimbursement support
 - Application specialists
 - Customer service
 - Supply chain support

BUILDING ROBUST RELATIONSHIPS
...with all players in the NeuraCeq® sales ecosystem

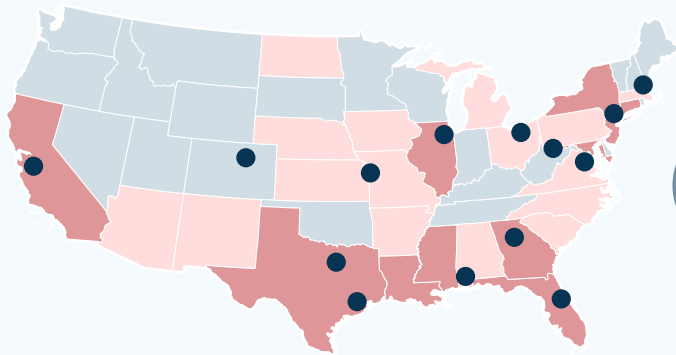
- > **300** hospitals and imaging centres
- Strong ‘**stickiness**’ of relationships
- Reaching c. **2 million AD patients and caregivers**³ through attendance of conferences, digital platforms and other industry events

LMI have the **right foundations** in place to increase sales of NeuraCeq® in the US, supported by a **clear, forward-looking plan**

¹LMI US team include sales and medical field force teams required to drive growth. ²Alzheimer’s Association Disease Report, 2024 ³Rough estimate based on the number of individuals that attend academic national and regional conferences, MSLs, educational events and through estimated reach of marketing activity.

Targeted approach to establishing manufacturing sites in high demand US locations

MANUFACTURING SITES LOCATED IN GEOGRAPHIES WITH HIGHER ALZHEIMER'S DISEASE PREVALENCE



14 Active sites

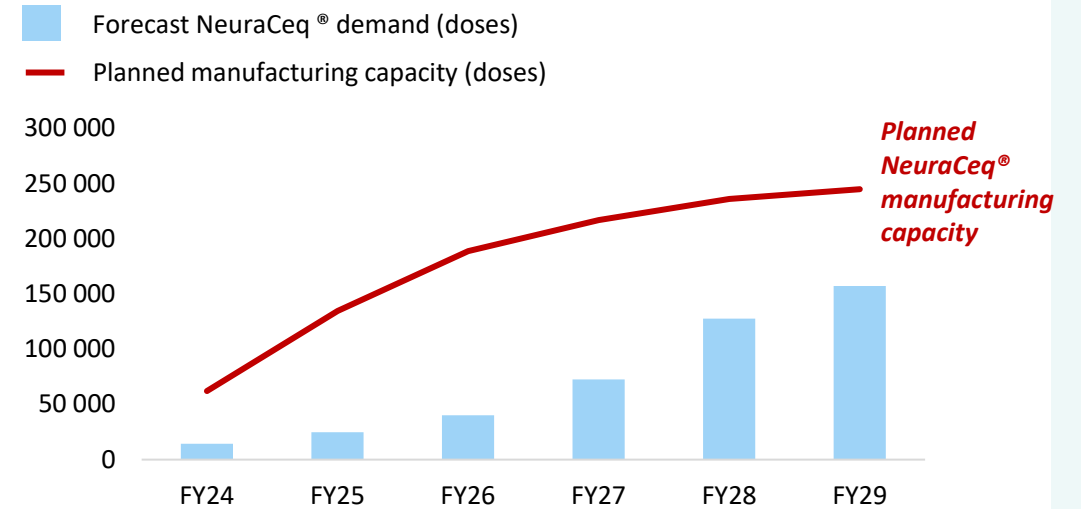
- 12.0 - 12.9% AD prevalence¹
- 11.0 – 11.9% AD prevalence¹
- < 10.9% AD prevalence¹

4 hours maximum distance to imaging centres, hospitals and referring physicians

Targeted focus in high demand markets such as New York, Florida, California, and Texas

Increasing from **3 to 5 production days** per week and **up to 2 batches per day**

MANUFACTURING CAPACITY INCREASED TO MATCH GROWING DEMAND²



WITH WELL-ESTABLISHED STRATEGIC PARTNERSHIPS



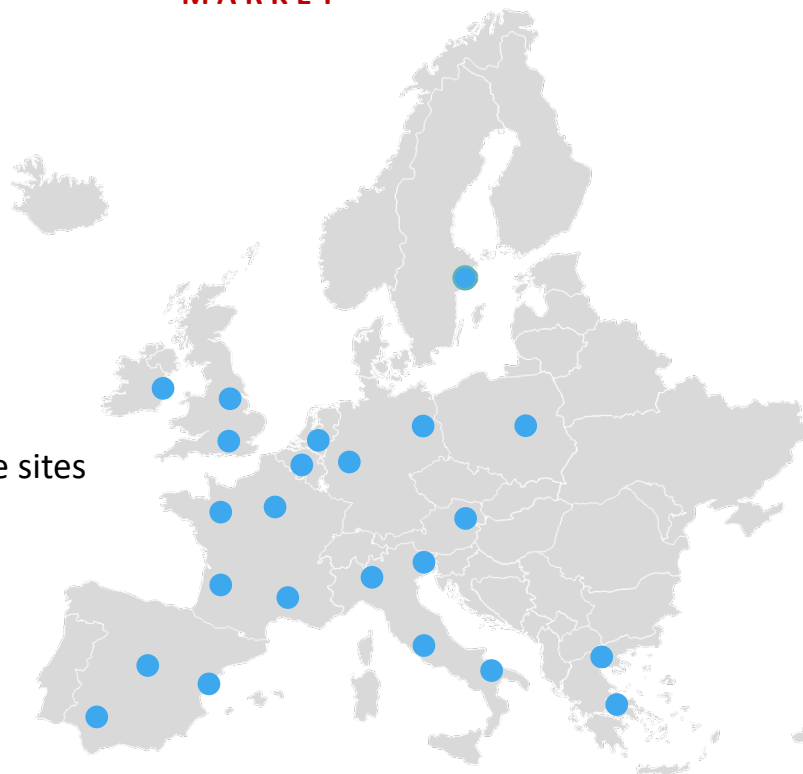
¹Alzheimer's Association Disease Report, 2024. ²Forecast NeuraCeq® demand based on assumptions of increased total amyloid detection market, PET-CT share of diagnostics market, and LMI market share of PET-CT market

'Active Sites' = manufacturing sites currently engaged in producing NeuraCeq®.

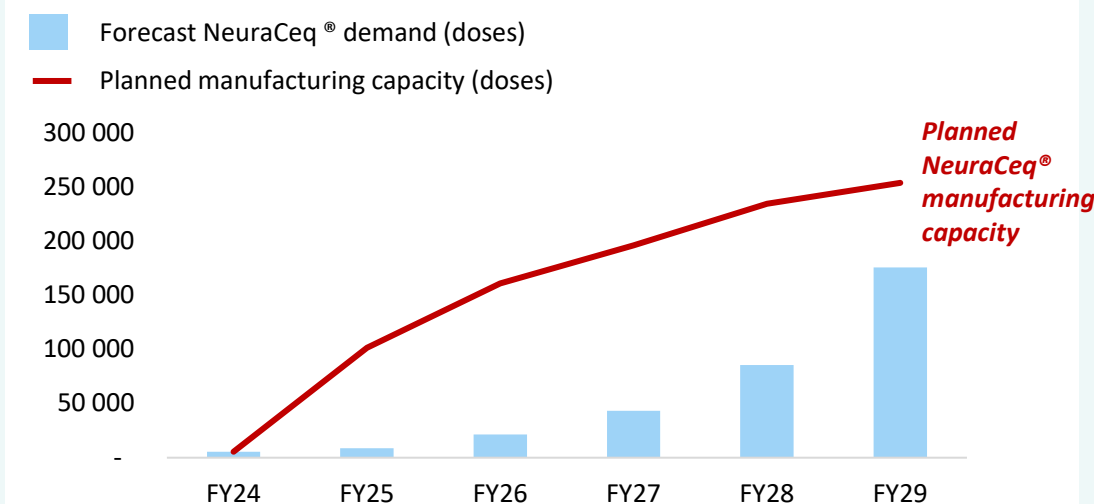
European growth will be driven by an increase in our partners' manufacturing and distribution capabilities

EXPANDING MANUFACTURING SITES WILL ENABLE LMI TO ACCESS A LARGER PROPORTION OF THE EUROPEAN MARKET

23  Active sites



FOCUS ON INCREASING MANUFACTURING CAPACITY TO MEET GROWING DEMAND¹



WITH WELL-ESTABLISHED STRATEGIC PARTNERSHIPS



¹Forecast NeuraCeq® demand based on assumptions of increased total amyloid detection market, PET-CT share of diagnostics market, and LMI market share of PET-CT market.

Note: 'Active Sites' = manufacturing sites currently engaged in producing NeuraCeq®; 'New site' = site contracted for manufacturing, and currently undergoing final stages of technology transfer and setup.

Sales approach in Europe is focused on building relationships with distributors, who sell NeuraCeq® directly to imaging centres

1

ANTICIPATING APPROVALS OF AD THERAPEUTICS

...to ensure manufacturing and distribution capacity meets future demand growth

- The European Union (EU) is currently awaiting the approval of disease-modifying drugs for AD, which will increase demand for NeuraCeq®
- **Leqembi®** approved in UK on Thursday 22nd August 2024
- Approval of **Kisunla®** is likely to be granted in 2024 by the regulatory authorities in the UK and EU
- Focus is on securing **production increase** in areas where **demand will increase the most**, in anticipation of potential drug approval

2

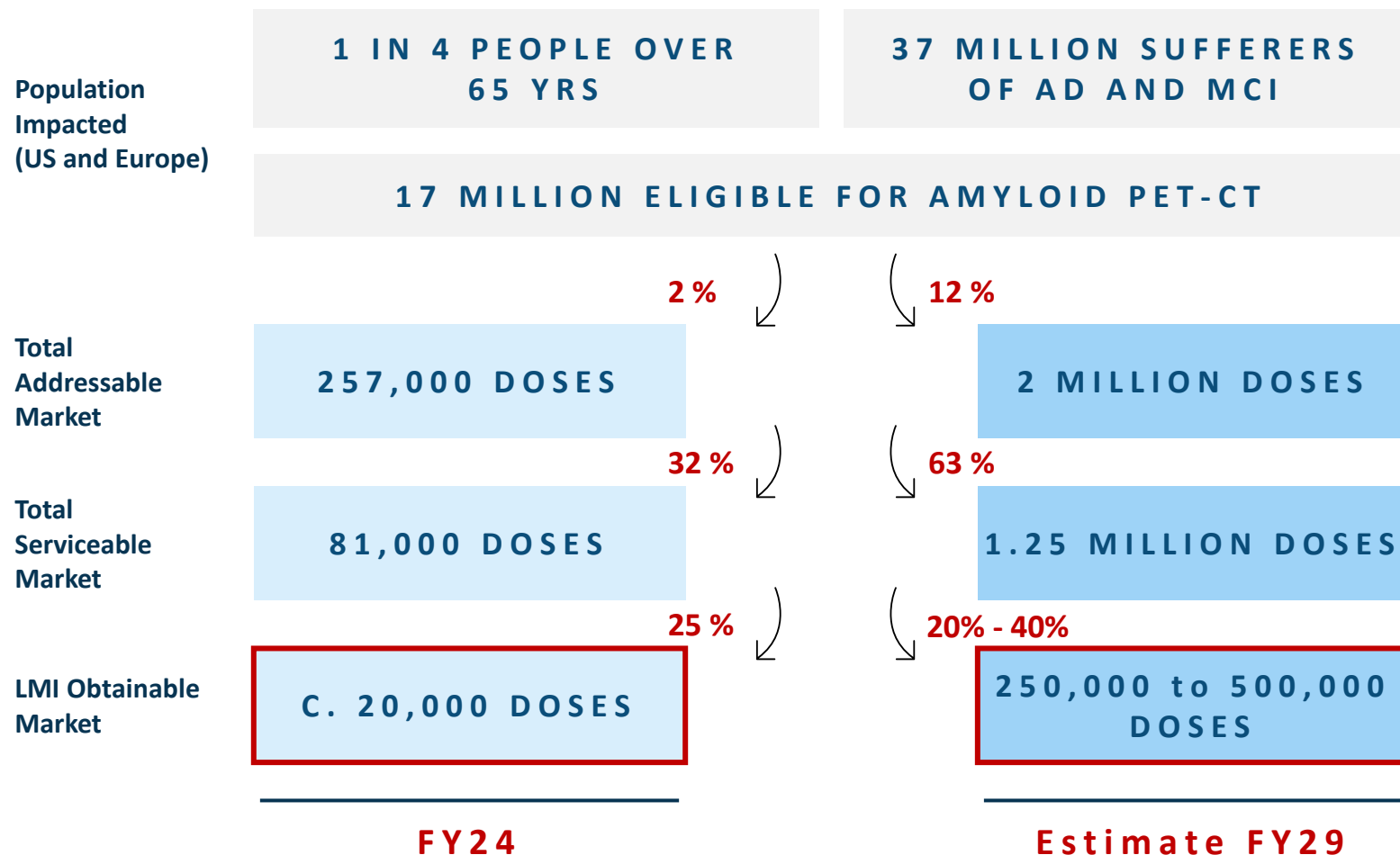
TARGETED APPROACH WITH DISTRIBUTORS

...to maximise the opportunity in Europe

- Prioritise securing distributors in countries where NeuraCeq® **reimbursement models** are already in place:
- Spain
 - France
 - Germany
 - UK
 - Italy

We are taking a targeted approach to **expanding distributor relationships** and, therefore, **sales** across UK and Europe

NeuraCeq[®] allows LMI to participate in the significantly growing Amyloid PET-CT market by FY29 (US and Europe)



% referred for PET-CT is forecast to **increase** as clinical recognition rises and more patients ask health care providers for disease-modifying drugs

% choosing to proceed with PET-CT diagnosis is forecast to **increase** as patient awareness of disease-modifying drugs increases

% LMI market share targeted

NeuraCeq® (US only) – Profitability



Dose price	<p>100%</p> <p>US NeuraCeq® commercial dose pricing</p>	→
Direct costs	<p>c. 30% of revenue</p> <p>Manufacturing, Cold kits, Transport</p>	→
Indirect costs	<p>c. \$20 million</p> <p>Cost of US operations fixed costs incl. sales and marketing and operational costs</p>	

STABLE PRICING
Price per dose expected to remain stable. No new competitors expected, IP protection till 2031 and ongoing demand growth ensure price stability

DIRECT COSTS STABLE
LMI has long term contracts with Radiopharmacy chains; increasing utilisation per batch will counter any cost increases due to inflation or new manufacturing contracts

SALES & MARKETING COSTS DECLINING
Investments are required to drive growth; however, we expect a reduction in costs as a percentage of revenue

OPERATIONAL COSTS DECLINING
Scaling the business, operational leverage and efficiencies in operational costs will increase profitability (i.e., we expect a reduction in operational costs as a percentage of revenue)

↑ **Total profitability increases through scale and operational leverage, with a large portion of indirect costs remaining fixed**

Summary of the NeuraCeq[®] growth opportunity

	TODAY		ESTIMATE 2029	
MARKET				
Growing US and European markets	81k Amyloid PET-CT scan demand ¹	\$162m Global Amyloid PET-CT market ¹	1.25m Amyloid PET-CT scan demand ¹	\$2.5bn Global Amyloid PET-CT market ¹
PRODUCT				
Approved product in the market, NeuraCeq [®]	c. 20,000 NeuraCeq [®] doses	↑ 160% - 190% YoY revenue growth FY23 - 24	250,000 to 500,000 NeuraCeq [®] doses (forecast)	20% - 40% Target market share
STRATEGY				
Established infrastructure in the US & European markets	37 Manufacturing sites	55 US team	Expand supply network by greater than a 100% and grow US commercial team	

¹Calculation based on assumptions on the AD and MCI population size, population eligible for PET-CT scan, and % referred for amyloid PET-CT scan and a price of \$2,000 per dosage.

Pathway 2: Maximise Product Pipeline

- Overview of late-stage and early-stage products
- Market opportunity and overview of CardioCeq and PI-2620
- Market opportunity and overview of DED and GP1
- Out-licensing and future payments of RM2

Earlier-stage products will also diversify LMI into different diseases and into the therapeutics space

GP1	DED	RM2 (<i>out-licensed</i>)
GP1 can detect the presence and active accumulation of blood clots before downstream implications are detected, i.e., high blood pressure and ultimately strokes	DED detects neuroinflammation, a major driver of Alzheimer’s Disease progression	RM2 is a ‘theranostic’ for diagnosing and treating Metastatic Castration Resistant Prostate Cancer (mCRPC), a sub-set of prostate cancer

OPPORTUNITY

<p>Every 40 seconds¹ Someone in the US has a stroke</p>	<p>15 - 40%¹ Of strokes are cryptogenic strokes, caused by active thrombus</p>	<p>37 million² People affected by AD in US and Europe</p>	<p>1 in 9³ People over the age of 65 with AD in US and Europe</p>	<p>3.4 million⁴ men have prostate cancer in the US, the most common cancer in men</p>	<p>50%⁵ of patients with mCRPC die</p>
---	--	---	---	---	--

¹American Stroke Association, 2024. ²Market projections, 2024. ³Alzheimer’s Association, 2024 ⁴National Cancer Institute, 2024. ⁵Thurin et al., 2020. ³Data Bridge Market Research, 2024.

Disclaimer: Market sizing estimates are based on publicly available information and represent a reasonable assessment but may not fully capture all market variables

The late-stage product pipeline will allow LMI to access new and growing market opportunities by 2027

PI-2620

PI-2620 binds to tau depositions and is a **complementary product** to NeuraCeq®, providing an additional level of **information** in the diagnosis of Alzheimer’s Disease and identifying **progressive supranuclear palsy (PSP)**.

CardioCeq

Cardiac Amyloidosis is an **underdiagnosed** cause of **heart failure**. It can be identified using **CardioCeq** and completing a PET-CT scan of the heart.

OPPORTUNITY

37 million people¹

Affected by Alzheimer’s Disease and MCI in US and Europe

Up to 6%²

Elderly people are not diagnosed with PSP until post-mortem

64 million people³

Suffer from heart failure globally

7%^{4,5}

Heart failures are caused by cardiac amyloidosis

¹Calculation based on understanding of current Alzheimer’s Disease (AD) and Mild Cognitive Impairment (MCI) prevalence within >65 YOA population. ²National Organisation for Rare Diseases, 2021. ³Global Heart & Circulatory Disease Factsheet, 2024. ⁴Global Public Health Burden of Heart Failure: An Updated Review, 2023. ⁵Hahn et al., JACC Heart Fail. 2020

Disclaimer: Market sizing estimates are based on publicly available information and represent a reasonable assessment but may not fully capture all market variables

LMI is well-placed to bring PI-2620 and CardioCeq to market and drive successful growth

WHY LMI ARE WELL-PLACED TO DRIVE GROWTH

	PI-2620	CardioCeq
	<ul style="list-style-type: none"> • Reimbursement pathway is already established • \$14 million revenue forecast already identified from use of TAU PET by pharma companies in clinical trials • Use existing network of manufacturers and contractors to accelerate market uptake • Other diagnostics are already in the market, but LMI have the benefit of a well-established brand and network of relationships 	<ul style="list-style-type: none"> • More specific diagnostic technique compared to alternative methods • No competing tracer approved in the market • Several therapy options for cardiac amyloidosis approved and reimbursed • Manufacturing network established for Neuraceq production
POTENTIAL BENEFIT	Total Addressable Market \$1 billion – \$1.5 billion	Total Addressable Market \$500 million – \$600 million

LMI is planning to bring-to-market new diagnostic and therapeutic products in the next 10 years

LATE-STAGE PRODUCTS

Next-generation radiotracers coming to market in the next 3 years

TARGET APPROVAL: 2027

PI-2620

Detection of **Alzheimer's Disease (AD)** and **Progressive Supranuclear Palsy (PSP)**

\$400 million – 450 million
Est. peak annual sales

Phase 1 Phase 2 **Phase 3**

CardioCeq

Detection of **cardiac amyloidosis**

>\$100 million
Est. peak annual sales

Phase 1 Phase 2 **Phase 3**

EARLY-STAGE PRODUCTS

Longer term pipeline products across diagnostics and therapeutics

TARGET APPROVAL: 2029+

GP1

Detection of **thrombus** and **strokes**

\$400 million – \$450 million
Est. peak annual sales

Phase 1 Phase 2 Phase 3

DED

Detection of **neuroinflammation** in AD and **other neurodegenerative** diseases

Very early phase - further evaluation required

Phase 1 Phase 2 Phase 3

RM2 (*out-licensed*)

Detection of and treatment of **metastatic castration resistant prostate cancer (mCRPC)**

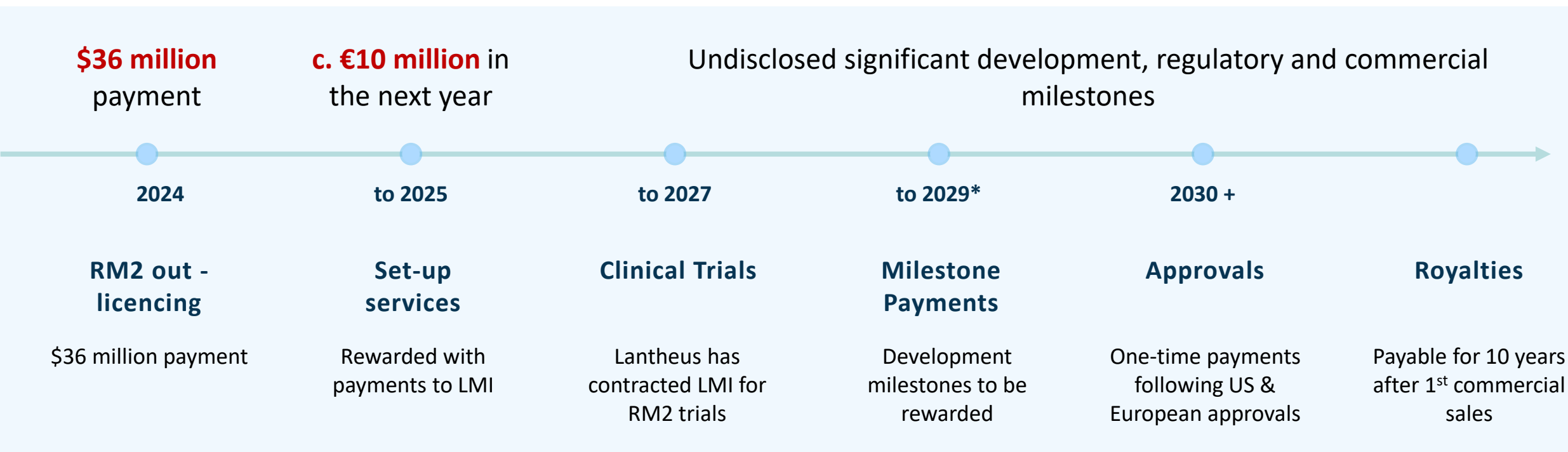
Out-licensed

Phase 1 Phase 2 Phase 3

The out-licensing of RM2 has created immediate and longer-term revenue opportunities

\$36 million upfront payment received in FY24

Significant potential future revenue to be generated in the next 5 – 10 years



Note: Projections are based on contracted deal terms, which may be contingent upon successful regulatory approval. While approval is cautiously anticipated by 2029, this timeline is subject to change and should not be considered guaranteed.

Pathway 3: Sustain R&D Services

- Overview of how R&D as a service contributes to LMI's value
- Overview of LMI's unique R&D Services & Supplies

Providing 'R&D as a service' delivers significant value for LMI

1

Consistent revenue stream that is less **subjective** to regulatory approvals

2

Build new and expand existing **relationships** with leading **pharmaceutical** and **educational** institutions

3

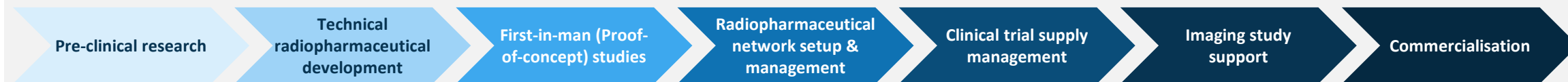
Generates new R&D opportunities that can be developed internally and build a **future pipeline for LMI**



*% of total LMI annual revenue is likely to decrease in the future. This is based on the assumption that total revenue from R&D services will remain constant, but total LMI revenue will increase.

LMI's R&D service offering differentiates us in the market

LMI PROVIDE CROs WITH ACCESS TO AN END-TO-END R&D PROCESS



WITH FOCUS ON THREE KEY DIFFERENTIATORS...

1

TECHNICAL SPECIALISTS

LMI have built **teams of world-leading experts** over **100+ years** combined expertise within radiopharmaceuticals and diagnostics, and with a deep understanding of the **evolving regulatory landscape**

2

UNIQUE OFFERING

LMI can provide R&D services both **with or without LMI's own tracers**. This is **unique** to other R&D organisations, who are **typically limited** to only providing services in conjunction with their own tracers

3

NETWORK

LMI's **reputation** in the radiopharmaceutical market has attracted **top industry connections** that can be used to **connect** CROs with **potential funders, researchers or contractors**

Conclusion and closing remarks

- Summary of the three pathways and future growth opportunity

Conclusion: LMI is expected to generate a diverse, sustainable source of revenue over the next 5 years

LMI are **well-positioned** to **grow significantly** in the **next 5 years** thanks to its three pathways

1

NEURACEQ®

NeuraCeq® demand is expected to **increase significantly**, driven by growing patient demand in the diagnosis of Alzheimer’s Disease, so that they can access **disease-modifying drugs**

\$2.5 billion
Total
Addressable
Market



20% to 40%
Target market
share

2

PRODUCT PIPELINE

Demand for PI-2620 and CardioCeq is expected to quickly grow when brought-to-market in 2027, enabled by **pre-existing reimbursement pathways** and **limited competition**

> \$900 million



Potential
peak annual
sales

3

R&D SERVICES & SUPPLIES

LMI’s R&D services are expected to continue to provide a **stable revenue stream**

c.\$20 million
Revenue assumption to remain
steady to FY29

Questions

About Neuraceq (florbetaben 18F) - for more information please visit: neuraceq.com

US prescribing information (Life Molecular Imaging Ltd., Fareham, UK, May 2024)

Indication

Neuraceq® is a radioactive diagnostic agent indicated for Positron Emission Tomography (PET) imaging of the brain to estimate β -amyloid neuritic plaque density in adult patients with cognitive impairment who are being evaluated for Alzheimer's Disease (AD) and other causes of cognitive decline. A negative Neuraceq scan indicates sparse to no neuritic plaques and is inconsistent with a neuropathological diagnosis of AD at the time of image acquisition; a negative scan result reduces the likelihood that a patient's cognitive impairment is due to AD. A positive Neuraceq scan indicates moderate to frequent amyloid neuritic plaques; neuropathological examination has shown this amount of amyloid neuritic plaque is present in patients with AD, but may also be present in patients with other types of neurologic conditions as well as older people with normal cognition. Neuraceq is an adjunct to other diagnostic evaluations.

Limitations of Use

- A positive Neuraceq® scan does not establish the diagnosis of AD or any other cognitive disorder.
- Safety and effectiveness of Neuraceq have not been established for:
 - Predicting development of dementia or other neurologic conditions
 - Monitoring responses to therapies.

Important Safety Information

- Risk for Image Interpretation and Other Errors
 - Errors may occur in the Neuraceq estimation of brain neuritic β -amyloid plaque density during image interpretation. Image interpretation should be performed independently of the patient's clinical information. The use of clinical information in the interpretation of Neuraceq images has not been evaluated and may lead to errors. Errors may also occur in cases with severe brain atrophy that limits the ability to distinguish gray and white matter on the Neuraceq scan. Errors may also occur due to motion artifacts that result in image distortion. Neuraceq scan results are indicative of the presence of brain neuritic β -amyloid plaques only at the time of image acquisition and a negative scan result does not preclude the development of brain neuritic β -amyloid plaques in the future.
 - Radiation Risk
 - Neuraceq, similar to other radiopharmaceuticals, contributes to a patient's overall long-term cumulative radiation exposure. Long-term cumulative radiation exposure is associated with an increased risk of cancer. Ensure safe handling to protect patients and health care workers from unintentional radiation exposure.
 - Common Adverse Reactions
 - The overall safety profile of Neuraceq is based on data from 1,090 administrations of Neuraceq to 872 subjects. No serious adverse reactions related to Neuraceq administration have been reported. The most frequently observed adverse drug reactions in subjects receiving Neuraceq were injection site reactions consisting of erythema (1.7%), irritation (1.1%) and pain (3.4%).
-

Appendix: Key terms

Key term	Explanation
Life Molecular Imaging	Owned by Life Healthcare Group, LMI is a company specialising in radiopharmaceutical diagnostics.
NeuraCeq®	NeuraCeq® is LMI's flagship product. It is a radiopharmaceutical tracer used to detect beta-amyloid plaques in the brain, aiding in the diagnosis of Alzheimer's Disease
Alzheimer's Disease	A progressive neurodegenerative disorder characterized by memory loss, cognitive decline, and behavioural changes, primarily caused by the accumulation of amyloid plaques and tau tangles in the brain
MCI (Mild Cognitive Impairment)	A condition involving noticeable cognitive decline, particularly in memory, that is greater than expected for age but not severe enough to interfere significantly with daily life
PET CT Scan	NeuraCeq® is detected in the body using a scanning machine called a PET CT scanner. Scans provide detailed functional and anatomical information, often used for diagnosing diseases like cancer and Alzheimer's Disease
Lumbar puncture	A medical procedure involving the insertion of a needle into the lower spine to collect cerebrospinal fluid (CSF) for diagnosing conditions such as neurological diseases by measuring biomarkers
Blood based biomarkers	Biological indicators found in blood that can be measured to assess or diagnose diseases, including neurodegenerative conditions like Alzheimer's Disease
Diagnostic	A tool or test used to identify the presence of a disease or condition without treating it
Therapeutic	A treatment or intervention aimed at curing, alleviating, or managing a disease or condition
Theranostics	Theranostic is a combination of radionuclide imaging (=diagnostic) and therapy that uses the same (or similar) targeting molecule or as a combination of imaging and therapy that both use the same molecular target.
Radiopharmaceutical	A drug containing radioactive isotopes used in diagnostics or treatment, such as imaging or targeted radiotherapy
Disease modifying drugs (DMDs)	Medications that alter the underlying disease process, slowing progression rather than just alleviating symptoms (Leqembi® / Kisunla®)
Reimbursement	The process by which healthcare providers or patients are paid back by entities like insurance companies (Medicare) for medical services, treatments, or products
Amyloid proteins	Abnormal protein aggregates forming plaques in tissues, notably beta-amyloid in Alzheimer's Disease, contributing to neurodegeneration
Neurodegeneration	The progressive loss of neuron function or structure, leading to conditions like Alzheimer's Disease